

# Oxford Flow

## Integrated Power Generation Unit

---

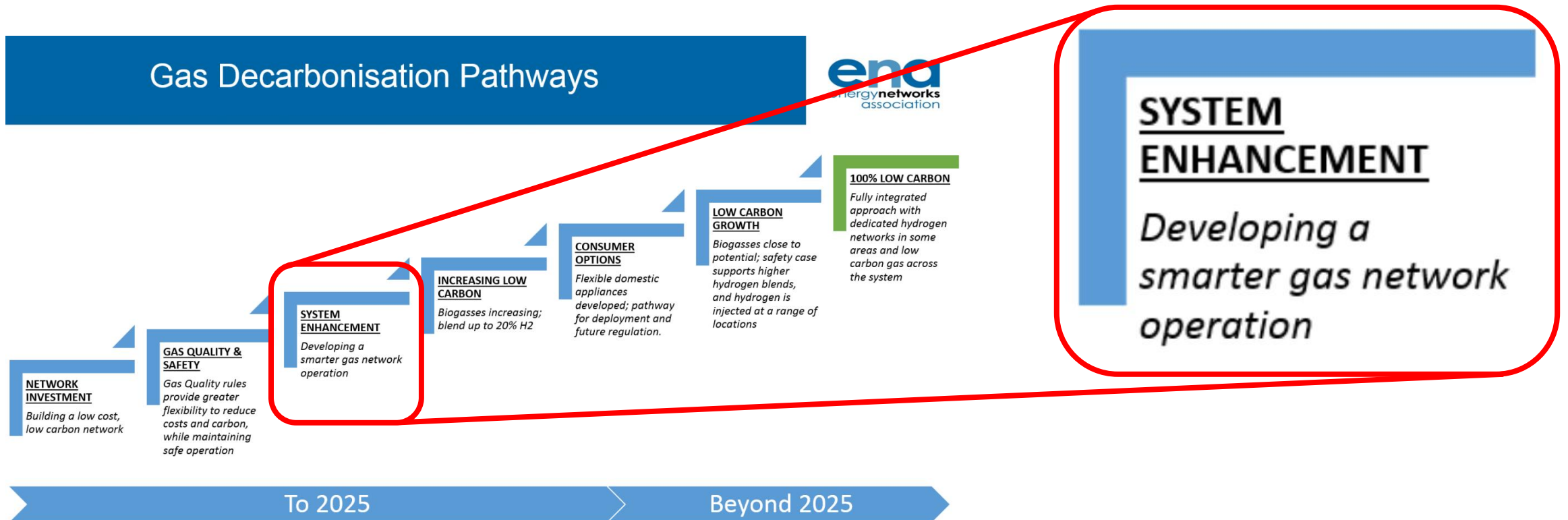
Rushlight Summer Showcase  
June 2019



# Oxford Flow

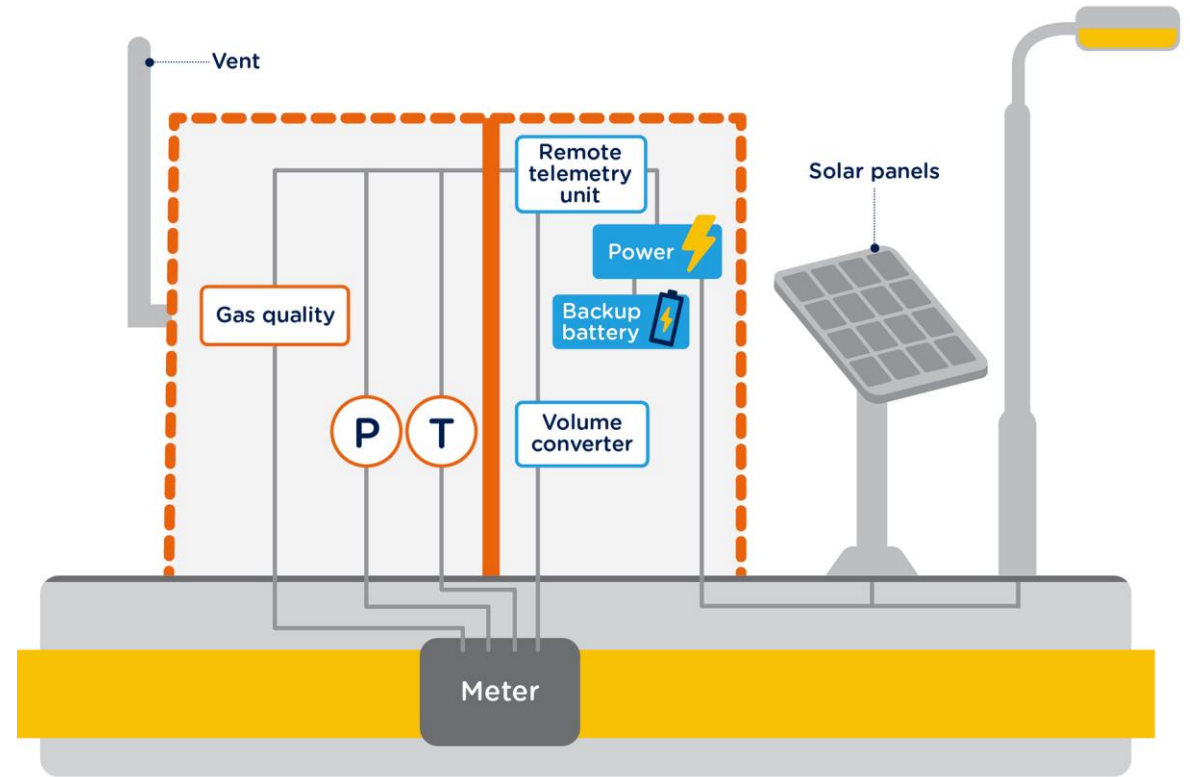


# Our part to play...



# Current Challenges

- Massive data collection and distribution is power-hungry
- PRIs in rural locations lack mains power.
- Related infrastructure is problematic and expensive...

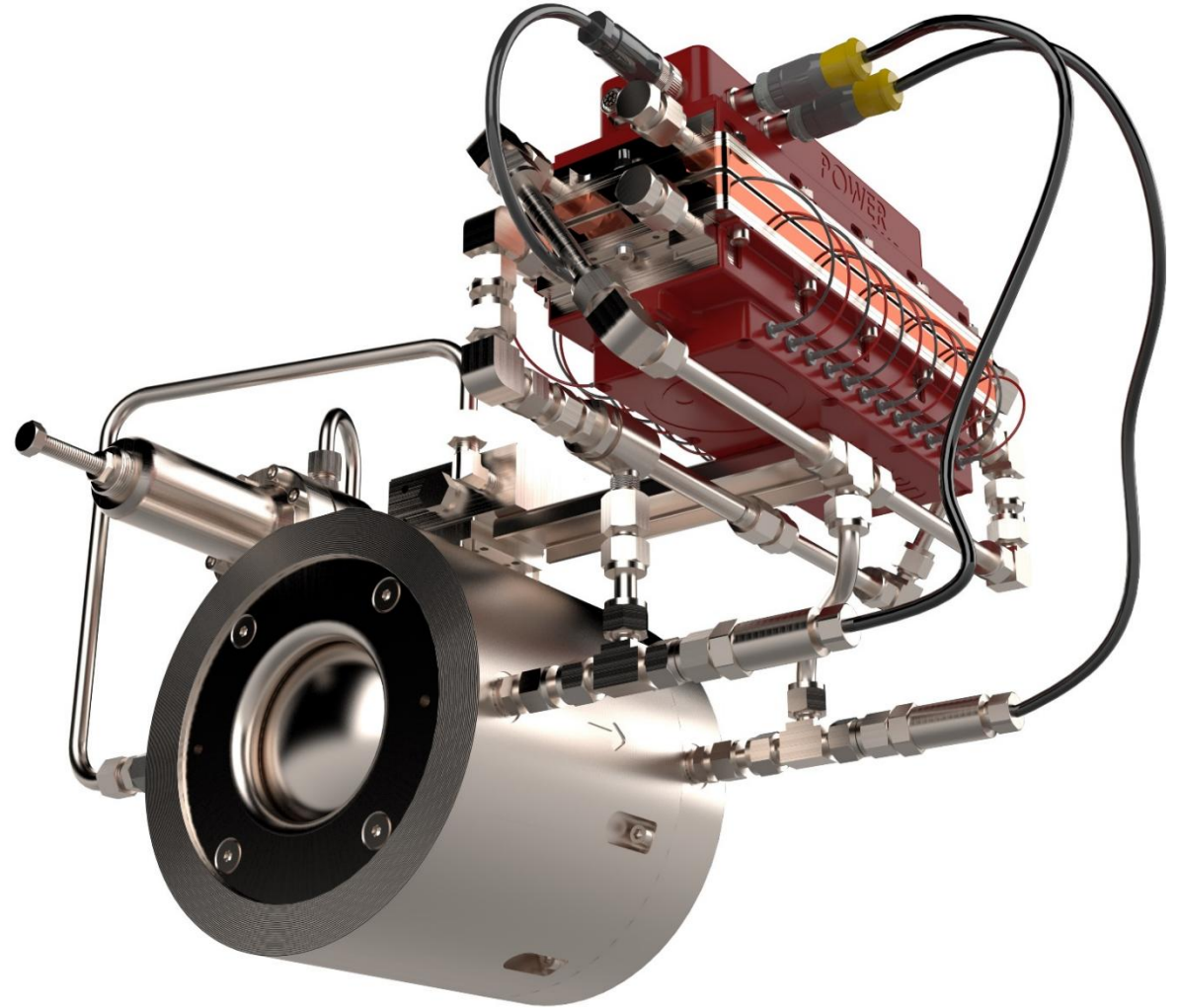


Pressure Reducing Installation (PRI) telemetry schematic

# The Solution

---

- Converts wasted energy into usable power
- Integrated telemetry capability
- Surplus power available
- Zero moving parts – no maintenance



# The bottom line...

---

*“Oxford Flow’s power generation solution seamlessly integrates full telemetry to any PRI, regardless of location, existing infrastructure and future power requirements”*